

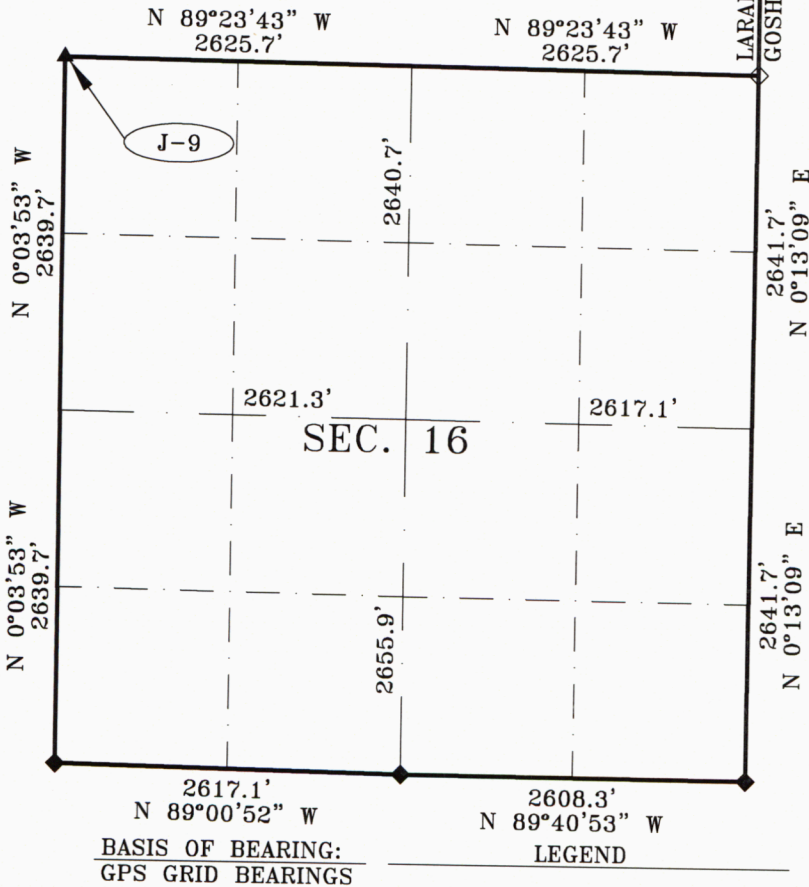
State of Wyoming Corner Record

(In compliance with the CORNER PERPETUATION AND FILING ACT, Wyoming Statutes, 1977, Section 36-11-101, et. seq., and the Rules and Regulations of the board of Registration for Professional Engineers and Professional Land Surveyors)

Reverse side of this form may be used if more space is needed

Record of original survey and citation of source of historical information (if corner is lost or obliterated). Description of corner monumentation evidence found and/or monument and accessories established to perpetuate the location of this corner. Sketch of relative location of monument, accessories, and reference points with course and distance to adjacent corner(s) (if determined in this survey). Method of rationale for re-establishment of lost or obliterated corner.

T 19 N - R 65 W



FOUND: SET MARKED STONE
12"x 2"x 7"



BASIS OF BEARING:
GPS GRID BEARINGS

LEGEND

- ◆ = 2010 ALUMINUM CAP, PLS 489
- ◇ = 2009 ALUMINUM CAP, PLS 489
- ▲ = SET MARKED STONE

ALL COURSES ARE MEASURED

Date of Field Work: 12/20/2011 Office Reference: 11710ACR.DWG

CROSS INDEX PLAT

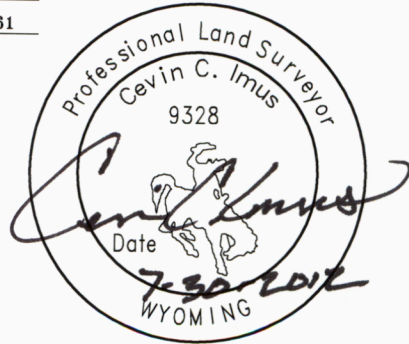
	1	2	3	4	5	6	7	8	9	10	11	12	13	14	15	16	17	18	19	20	21	22	23	24	25
A																									
B																									
C	6	5	4	3	2	1																			
D																									
E																									
F																									
G																									
H	7	8	9	10	11	12																			
J																									
K																									
L	18	17	16	15	14	13																			
M																									
N																									
O																									
P	19	20	21	22	23	24																			
Q																									
R																									
S																									
T	30	29	28	27	26	25																			
U																									
V																									
W																									
X	31	32	33	34	35	36																			
Y																									
Z																									

Firm/Agency, Address

LAND SURVEYING INCORPORATED
209 NORTH WORKS AVE.
GILLETTE, WY 82716
Telephone Number: 307-682-1661

This corner record was prepared by me or under my direction and supervision.

SEAL & SIGNATURE



STATE OF WYOMING
Office of Clerk and Recorder
County of Laramie

This "corner record" was filed at _____

RECORDED 8/09/2012 AT 2:20 PM REC# 596707 BK# 2289 PG# 645
DEBRA K. LATHROP, CLERK OF LARAMIE COUNTY, WY PAGE 1 OF 1

County Clerk _____ Deputy _____

Corner Name: NORTHWEST Section: 16 T 19 N R 65 W 6th P.M. Cross-Index No.: J-9